



**WESTIN**<sup>®</sup>  
HOTELS & RESORTS

## **CUSTOM LOGO MAT COLLECTION**

ColorStar® Impressions

Classic Impressions™ HD

Classic Impressions™ HD Custom Shape

WaterHog Impressions HD®

Berber Roll Goods Inlay

WaterHog® Eco Elite Roll Goods Inlay

WaterHog® Inlay

WaterHog® Legacy Inlay

SuperScrape™ Impressions

Hog Heaven® Impressions





Indoor

## COLORSTAR® IMPRESSIONS

Logo - Carpeted (Wiper)

3/8" SBR Rubber Backing

Product No. 60

- **Photographic-Quality Printing** - Logos and designs are digitally printed at 76 dpi (dots per inch), making fine details, shading, and 3-D images achievable
- **Eco-Friendly** - PET (polyethylene terephthalate) carpet surface contains 50% post-consumer recycled content reclaimed from plastic bottles
- **Fade Resistant** - PET yarn has excellent color-fastness and is resistant to fading from repeated washing/cleaning
- **Stain Resistant** - PET yarn is naturally resistant to staining
- **Safe** - Certified high-traction by the National Floor Safety Institute (NFSI)
- Choose from 60 standard colors
- SBR (48 mil) rubber backing; also available with nitrile rubber backing

### SIZES

2' x 3'  
3' x 4'  
3' x 5'  
3' x 10'  
4' x 6'  
4' x 8'  
5' x 8'  
5' x 10'  
6' x 10'  
6' x 12'

See price list for all additional sizes.

Sizes are approximate.



## CLASSIC IMPRESSIONS™ HD

Logo - Carpeted (Wiper)

3/8" SBR rubber border and backing  
3/8" Vinyl border and backing

Product No. 73  
Product No. 73



## CLASSIC IMPRESSIONS™ HD CUSTOM SHAPE

3/8" Nitrile rubber backing

Product No. 733

- **Photographic-Quality Print** – Logos and designs are digitally printed with photographic quality; fine details, shading, and 3D images can be achieved
- **Safe** - Certified high-traction by the National Floor Safety Institute (NFSI)
- **Resilient** – High-twist, heat-set nylon (32-ounces/square yard) resists crushing to better trap dirt and extend the useful life of the mat
- Choose from 150 standard colors available
- Available with SBR or vinyl backing; custom shape mats have 90-mil rubber backing
- Available in 10 standard sizes and custom sizes in widths of 3', 4', 5', and 6' and lengths up to 40'
- Custom shape mats are available in sizes up to 6' wide and 23' long

### SIZES

2' x 3'  
3' x 4'  
3' x 5'  
3' x 10'  
4' x 6'  
4' x 8'  
5' x 8'  
5' x 10'  
6' x 10'  
6' x 12'

Sizes are approximate. See price list for all additional sizes. PMS custom color available at an additional charge.



Classic Impressions HD Logo  
Custom Shape





WaterHog  
Impressions HD with  
Classic Border

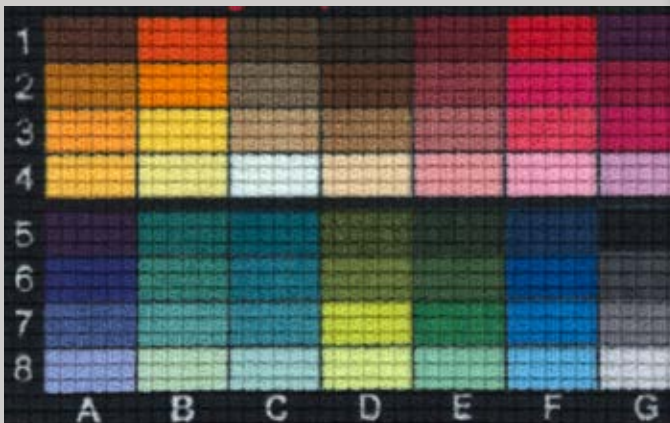
## WATERHOG IMPRESSIONS HD®

Logo • Scraper/Wiper

3/8" Classic Border    Product No. 2381  
3/8" Fashion Border    Product No. 2380



Indoor or Outdoor



Color options

- **Clean & Dry** – Bi-level surface effectively scrapes dirt and moisture from shoes, trapping it beneath shoe level to prevent tracking; water dam border holds moisture keeping it off your floors (WaterHog mats can hold up to 1.5 gallons of water per square yard)

- **Durable** – Reinforced rubber nubs prevent pile from crushing and extend the performance life of the mat

- **Safe** – Beveled edges provide a safe transition from floor to mat; certified high-traction by the National Floor Safety Institute (NFSI)

- 56 standard color options; available with choice of classic rubber border or fashion fabric border

- Features 65-mil nitrile rubber with choice of smooth or universal cleated backing

### SIZES

2' x 3'	4' x 6'
3' x 4'	4' x 8'
3' x 5'	6' x 8'
3' x 10'	6' x 10'
3' x 12'	6' x 12'
3' x 16'	6' x 16'
3' x 20'	6' x 20'

See price list for all additional sizes.

Sizes are approximate.





## BERBER ROLL GOODS INLAY

Logo • Carpeted (Wiper)

3/8" Product No. 2283



Indoor or Outdoor

- **Durable** - Heavy 52-ounce solution-dyed fabric is stain resistant and has excellent light fastness; tough enough for outdoor use
- **Attractive** - Loop pile "berber" construction features a hobnail design for an upscale look
- **Safe** - High-performance rubber backing helps hold the mat in place to minimize slipping hazards
- **Easy to Clean** - Polypropylene fabric is naturally resistant to staining and fading
- 17 colors to choose from
- Available in custom sizes up to 12' X 50'
- Designed to be installed like carpeting or loose laid like a mat; available with singed borders or vinyl nosing (sold separately)

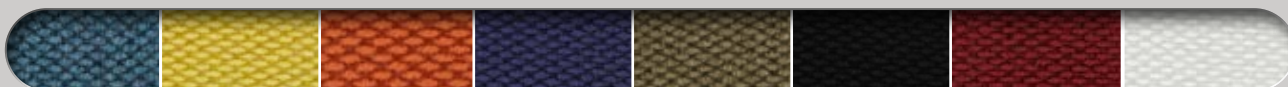
### CUSTOM

**SIZES** available in 3' to 12' widths in sizes up to 12' x 50'. See price list for additional information. Sizes are approximate.

Widths over 6' will be seamed.



Bright Red    Burgundy    Charcoal    Dark Blue    Dark Brown    Dark Green    Emerald Green    Gold    Grey



Light Blue    Light Yellow    Orange    Purple    Sand    Solid Black    Solid Red    White





Waterhog Eco Elite Logo  
Sothern Pine

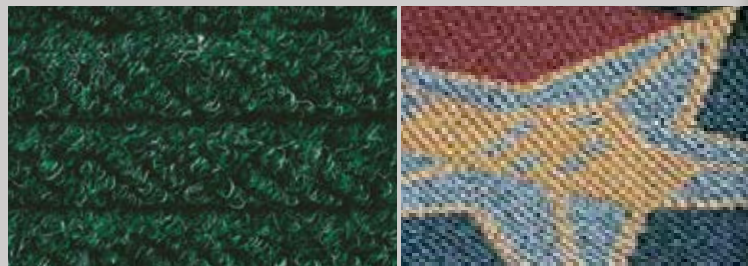
## WATERHOG® ECO ELITE ROLL GOODS INLAY

Logo • Scraper/Wiper

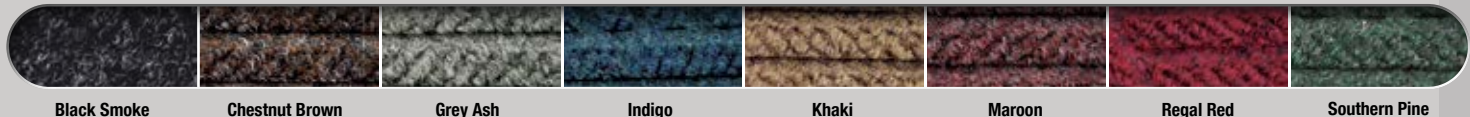
**3/8" Product No. 2268**

- **Clean & Dry** - Bi-level surface effectively scrapes dirt and moisture from shoes, trapping it beneath shoe level to prevent tracking; water dam border holds moisture keeping it off your floors (WaterHog mats can hold up to 1.5 gallons of water per square yard)
- **Durable & Fade Resistant** - Reinforced rubber nubs prevent pile from crushing and extend the performance life of the mat; solution-dyed fabric is fade-resistant
- **Safe** - Beveled edges provide a safe transition from floor to mat; certified high-traction by the National Floor Safety Institute (NFSI)
- 17 logo colors and 8 background colors to choose from
- Features 78-mil SBR smooth rubber backing
- Designed to be installed like carpeting or loose-laid like a mat; vinyl nosing available for border (sold separately)

**CUSTOM SIZES**  
Available in 3' to 12' widths in sizes up to 12' x 50'. See price list for additional information.  
Sizes are approximate.



### BACKGROUND COLORS



Black Smoke    Chestnut Brown    Grey Ash    Indigo    Khaki    Maroon    Regal Red    Southern Pine

### LOGO COLORS



Bright Red    Burgundy    Charcoal    Dark Blue    Dark Brown    Dark Green    Emerald Green    Gold    Grey

Light Blue    Light Yellow    Orange    Purple    Sand    Solid Black    Solid Red    White



# WATERHOG® INLAY

Logo · Scraper/Wiper



Indoor or Outdoor

3/8" Classic (rubber border)  
3/8" Fashion (fabric border)

Product No. 234  
Product No. 235

- **Clean & Dry** - Bi-level surface effectively scrapes dirt and moisture from shoes, trapping it beneath shoe level to prevent tracking; water dam border holds moisture keeping it off your floors (WaterHog mats can hold up to 1.5 gallons of water per square yard)
- **Durable & Fade Resistant** - Reinforced rubber nubs prevent pile from crushing and extend the performance life of the mat; solution-dyed fabric is fade-resistant
- **Safe** - Beveled edges provide a safe transition from floor to mat; certified high-traction by the National Floor Safety Institute (NFSI)
- **Eco-Friendly** - Rubber backing contains 20% post-consumer recycled rubber from car tires
- 19 fabric colors to choose from
- Available with choice of classic rubber border or fashion fabric border

## SIZES

2' x 3'    4' x 10'  
3' x 4'    4' x 12'  
3' x 5'    4' x 16'  
3' x 10'    4' x 20'  
3' x 12'    6' x 8'  
3' x 16'    6' x 12'  
3' x 20'    6' x 16'  
4' x 6'    6' x 20'  
4' x 8'

Sizes are approximate. See price list for all additional sizes.



Aquamarine\*    Bluestone    Bordeaux    Camel    Charcoal    Dark Brown    Evergreen    Gold\*    Light Green    Medium Blue



Medium Brown    Medium Grey    Navy    Orange\*    Purple\*    Red/Black    Solid Red\*    White\*    Yellow\*

\*These colors are ONLY available in 3' and 4' widths.



Indoor or Outdoor

# WATERHOG® LEGACY INLAY

Logo · Scraper/Wiper

3/8" Classic (rubber border)  
3/8" Fashion (fabric border)

Product No. 261  
Product No. 262

- **Clean & Dry** - Bi-level surface effectively scrapes dirt and moisture from shoes, trapping it beneath shoe level to prevent tracking; water dam border holds moisture keeping it off your floors (WaterHog mats can hold up to 1.5 gallons of water per square yard)
- **Durable & Fade Resistant** - Reinforced rubber nubs prevent pile from crushing and extend the performance life of the mat; solution-dyed fabric is fade-resistant
- **Safe** - Beveled edges provide a safe transition from floor to mat
- **Eco-Friendly** - Rubber backing contains 20% post-consumer recycled rubber from car tires

## SIZES

2' x 3'    4' x 10'  
3' x 4'    4' x 12'  
3' x 5'    4' x 16'  
3' x 8'    4' x 20'  
3' x 10'    6' x 6'  
3' x 12'    6' x 8'  
3' x 16'    6' x 10'  
3' x 20'    6' x 12'  
4' x 4'    6' x 16'  
4' x 6'    6' x 20'  
4' x 8'

Sizes are approximate.



Aquamarine\*    Bluestone    Bordeaux    Camel    Charcoal



Dark Brown    Evergreen    Gold\*    Light Green    Medium Blue    Medium Brown



Medium Grey    Navy    Orange\*    Purple\*    Red/Black    Solid Red\*    White\*    Yellow\*

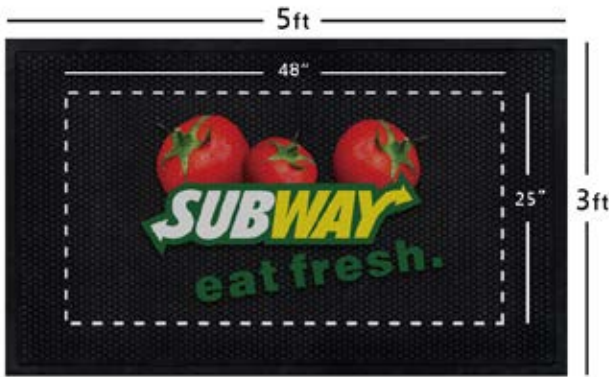
\*These colors are ONLY available in 3' and 4' widths.







Indoor or Outdoor



Visit [mamatting.com](http://mamatting.com) for imprint area and other design specifications.



Indoor



## SUPERSCAPE™ IMPRESSIONS

Logo • Scraper

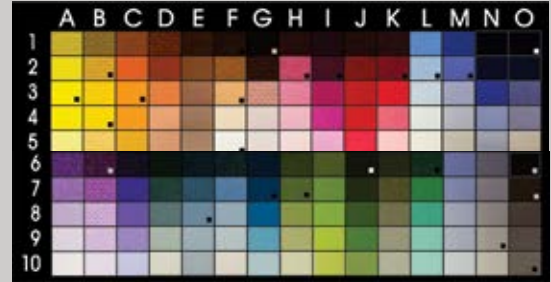
3/16" Product No. 3559

- **Clean** - Surface cleats effectively remove and trap dirt and sand below shoe level to prevent tracking
- **Safe** - Certified high-traction by the National Floor Safety Institute (NFSI)
- **Easy to Clean** - Lightweight flexible design ensures easy handling and cleaning (shake off soil and hose off); can be commercially laundered
- **Features** 3/16" thick nitrile rubber with circular surface cleats

### SIZES

2.5' x 3'  
3' x 4'  
3' x 5'  
3' x 10'  
4' x 6'  
4' x 8'  
6' x 6'  
6' x 8'

Sizes are approximate. PMS custom color available at an additional charge.



## HOG HEAVEN® IMPRESSIONS

Logo • Anti-Fatigue

5/8" Product No. 3422

- **Comfortable** - 5/8" high-density nitrile-blended cushion helps eliminate pressure to the lower back and legs, providing superior comfort
- **Safe** - Certified high-traction by the National Floor Safety Institute (NFSI); edges will not crack or curl and provide a safe transition from floor to mat
- **Durable** - Nitrile-blended cushion provides years of useful service life; cushion is molded, not glued, to the nitrile rubber surface so it will not separate
- **Versatile** - Welding safe; grease/oil resistant; chemical resistant

### SIZES

2' x 3'  
3' x 5'  
3' x 12'  
4' x 6'

Sizes are approximate.

See price list for all additional sizes. PMS custom color available at an additional charge.

100%  
customer satisfaction  
GUARANTEED

NFSI  
HIGH-TRACTION

MADE  
IN THE  
USA

## Mat Symbols



### Scraper

Scraper mats are heavy-duty mats designed to stop mud and larger particles of dirt from being tracked inside buildings.



### Scraper/Wiper

Scraper/Wiper mats provide scraping action and wiping to further stop dirt and moisture from entering a facility. These mats are typically made of tough heavy-duty commercial fabrics. They retain dust in recessed grooves while absorbing moisture in the fabric surface.



### Carpeted (Wiper)

Wiper mats are designed to stop any remaining dust and moisture. These mats are made with a variety of carpeted surfaces and colors to compliment a wide range of interiors.



### Anti-Fatigue

Ergonomic mats and floor tiles reduce fatigue by up to 50%. Anti-fatigue mats help increase blood circulation and reduce pressure on the body's musculoskeletal system. They also reduce foot arch pronation, varicose veins, and pain commonly attributed to standing for long periods of time.



### Anti-Slip

Uniquely designed texturized surfaces prevent slip and fall accidents. Heavy-duty rubber keeps the mats in place and prevents movement on a variety of surfaces.



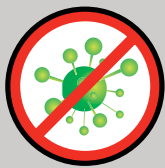
### Damp Areas

May be used in areas where moisture is present.



### Wet Areas

Recommended for use in wet areas. While other mats may be suitable for use in wet areas, mats with the wet icon are the best choice for wet areas. These mats are designed to provide traction even in very wet conditions.



### Anti-Microbial

Matting permanently treated with an anti-microbial agent that guards against degradation from micro-organisms and minimizes mats being a source of odors.

## Mat Symbols



### Chemical Resistant

Many M+A Matting mats are manufactured with nitrile rubber which is resistant to most commonly used chemicals.



### Oily Environment

Nitrile rubber mats withstand degradation from oils and grease. These mats are suitable for use in environments with industrial oils, machine lubricants, greases, food grade oils, etc.



### Safety

Matting and tiles with highly visible, colored borders and beveled edges reduce trips and falls.



### Welding Safe

Matting that is suitable for use in locations of high temperatures and welding slag. The temperature resistant rubber can withstand temperatures up to 1742 degrees Fahrenheit from welding slag and hot metal shavings.



### ESD

Matting that dissipates static electricity from people to protect sensitive equipment and small static generated electric shocks.



### Cart Traffic

Matting and tiles designed to withstand heavy cart traffic.



### Recycled Content

Contains recycled content.