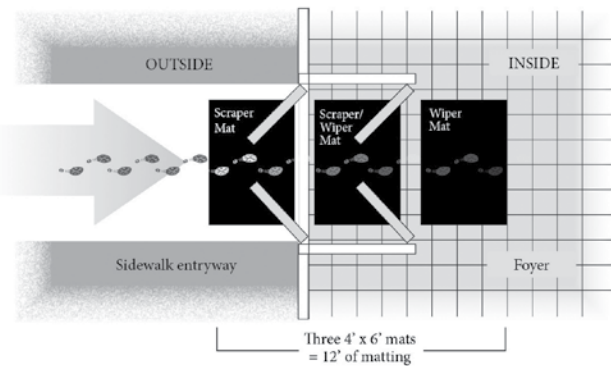


Preventative Maintenance

Mats are the first defense to stop dirt and moisture from entering your building. Mats filter these contaminants from entering the facility, saving thousands of dollars a year in cleaning costs. Mats also protect interior floor surfaces from excessive damage and wear. Entrance mats are the most effective way of stopping dirt and moisture at the door and keeping building maintenance costs to a minimum.

Consider These Facts...

- 70% to 80% of dust, grime, and dirt in a building is tracked in from the outside on people's feet—permanently damaging floors.
- One square yard of carpet can accumulate one pound of dirt a week—twice that in inclement weather.
- It is estimated that the cost to find and remove a single pound of dirt from a building can run in excess of \$600 in cleaning costs. As few as 150 people entering a facility can track in one pound of dirt in a 5 day work week costing over \$30,000 dollars annually to remove.
- By utilizing high performance entrance matting of at least 15' to 18' (as recommend by the U.S. Green Building Council and the Carpet and Rug Institute) you can capture as much as 85% to 95% of contaminants that enter the building, saving maintenance dollars and protecting building assets.



Safety and Ergonomics

Mats are used throughout facilities in numerous other capacities where safety is a must and anti-fatigue comfort is essential to the health and well being of employees.

- Slip and falls are the second leading cause of all workplace injuries according to Liberty Mutual Workplace Index. As many as 25,000 people a day are victims of slip and fall accidents (NSC).
- Compensation and medical costs associated with employee slip-and-fall accidents total approximately \$70 billion annually (NSC).
- The average cost of a slip-and-fall injury exceeds \$12,000 (Wausau Insurance).
- The average cost to defend a slip-and-fall lawsuit is \$50,000 (NFSI).
- Back injuries account for 25% of all worker compensation claims annually.
- Cumulative Standing Trauma (CST) causes billions of dollars of loss annually due to reduced productivity, increased worker compensation, higher insurance rates and absenteeism.
- According to the American College of Occupational and Environmental Science, about 38% of workers in the United States suffer from fatigue.

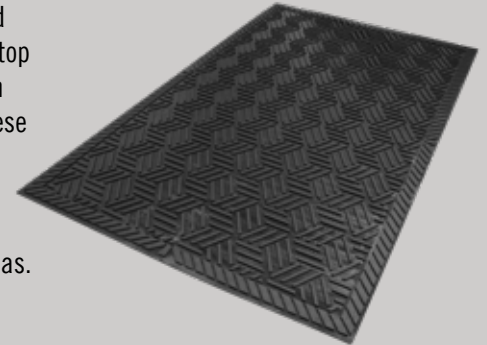


Did you know ?

Scraper Mats

The First Line of Defense

Scraper mats are designed for placement outside to stop mud and large debris from entering your building. These mats provide aggressive scraping action to remove dirt and debris from shoes and trap it in recessed areas.



WaterHog (Scraper/Wiper) Mats

The Second Step to Keeping Floors Clean & Dry

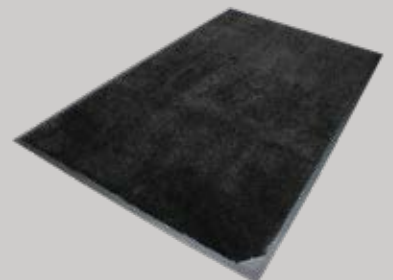
WaterHog mats feature a unique bi-level design that scrapes dirt and wipes moisture from shoes. These mats are made with durable fibers that quickly dissipate water, while dirt and debris fall to the bottom of the mat, beneath shoe level, to prevent tracking. WaterHog mats are typically used inside, but they may be used outside as well.



Carpeted (Wiper) Mats

The Third Step Against Dirt & Moisture

As entrance mats, carpeted mats are designed to remove any remaining dirt and moisture from shoes. They also provide excellent dust control. Carpet is made in a variety of materials and colors to suite a variety of needs and blend with virtually any décor. Carpeted mats are designed for indoor use. When used in conjunction with a scraper mat and WaterHog mat, they can stop as much as 85% to 95% of dirt from entering a building.



the right mat for every job.

Logo Mats

Promote Your Brand

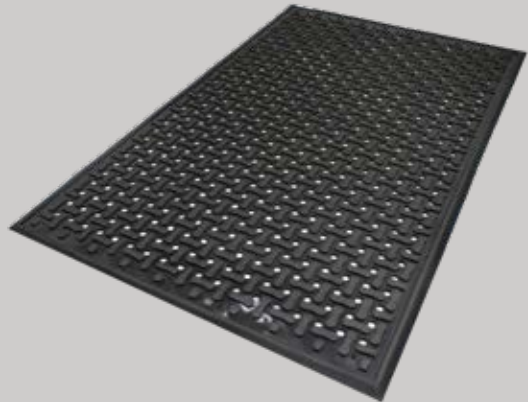
Logos, messages, and artwork add a professional look to any entrance or lobby, in addition to the cleanliness and safety benefits the mat itself provides. M+A can add your logo or custom artwork to mats of all types.



Flow-Through Mats

Wet Area Solutions

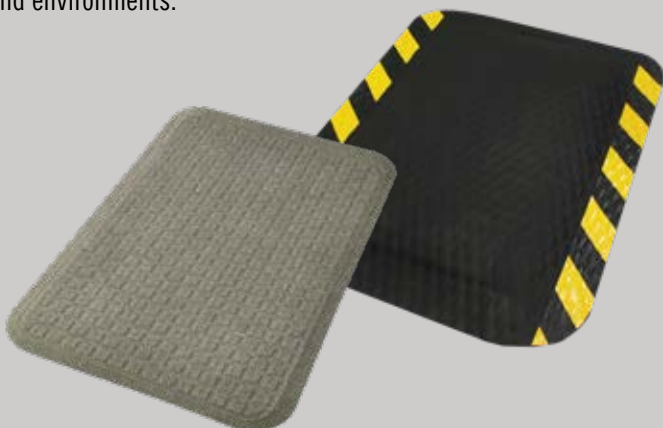
Flow-through mats are designed for wet environments. The surface offers extra traction while the holes allow liquid to pass through to help eliminate slipping hazards. Flow-through mats also provide excellent anti-fatigue benefits for workers who stand for long periods of time.



Anti-Fatigue Mats

Provide Comfort & Safety

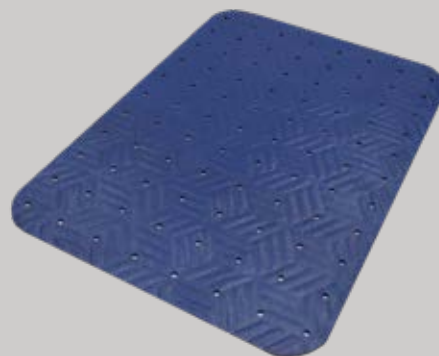
Standing for long periods of time restricts blood flow to the lower extremities, causing soreness and fatigue. Anti-fatigue mats provide support to muscles in the lower legs and back and promote subtle movement in the leg and calf muscles which results in increased blood and oxygen flow. Anti-fatigue mats are available in a wide array of thicknesses and materials to suite a variety of workspaces and environments.



Slip-Resistant Mats

Protect Against Slips and Falls

With slip-and-fall accidents comprising the majority of worker's compensation claims and a large share of unintended injuries in general, it's more important than ever to ensure that surfaces are as slip resistant as possible. Slip-resistant mats are an ideal solution for providing traction in slippery areas.





Mat Entry System

Stop dirt and moisture at your door





Did you know: 85% of dirt, dust, and moisture brought into a building can be contained within the first 15 to 18 feet with mats (ISSA).



texstyles.net

ENTRANCE MATTING

Scraper

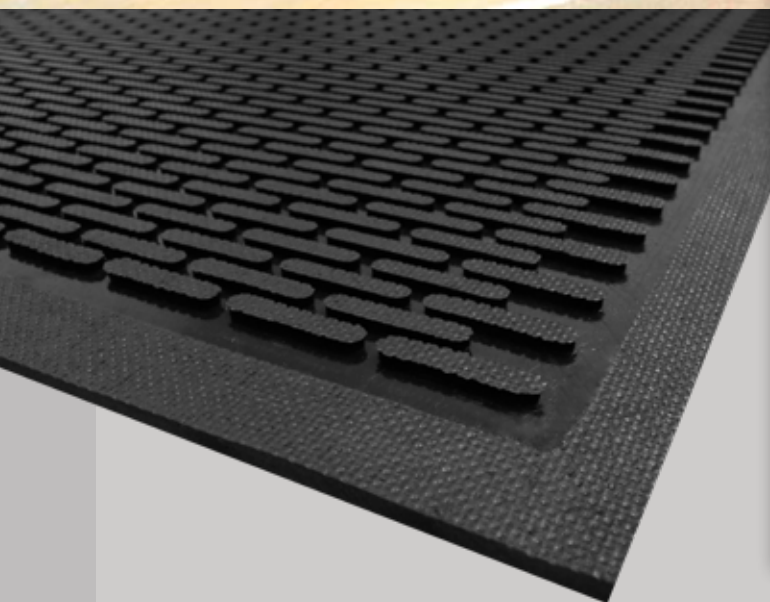
- SuperScrape™
- SuperScrape Plus®
- Flex Tip™
- Frontier
- Brush Hog™

WaterHog

- WaterHog®
- WaterHog® Diamond
- WaterHog® Legacy
- WaterHog® Grand
- WaterHog® Modular Tiles
- WaterHog® Tiles
- WaterHog® Eco Tiles
- WaterHog® Eco Premier
- WaterHog® Eco Elite
- WaterHog® Eco Legacy
- WaterHog® Eco Grand
- WaterHog® Eco Elite Roll Goods
- WaterHog® Plus
- WaterHog® Diamondcord
- WaterHog® Masterpiece® Select
- WaterHog® Low Profile

Carpeted

- Berber Roll Goods
- MicroLux™
- Plush™
- ColorStar®
- Enviro Plus®
- Stylist
- Impressionist
- Cobblestone™
- Victory



SUPERSCAPE™

Scraper • Slip-Resistant

3/16" Product No. 555 & 5555

- **Clean** – Surface cleats effectively remove and trap dirt and sand below shoe level to prevent tracking
- **Safe** – Slip resistant even in wet environments; certified high-traction by the National Floor Safety Institute (NFSI)
- **Suitable for Harsh Environments** – Grease/oil proof; chemical resistant
- **Easy to Clean** – Lightweight flexible design ensures easy handling and cleaning (shake off soil and hose off); can be commercially laundered or autoclave sterilized
- 3/16" thick nitrile rubber

SIZES

2'5" x 3'
3' x 5'
3' x 10'
4' x 6'
4' x 8'
6' x 6'
6' x 8'

Sizes are approximate.

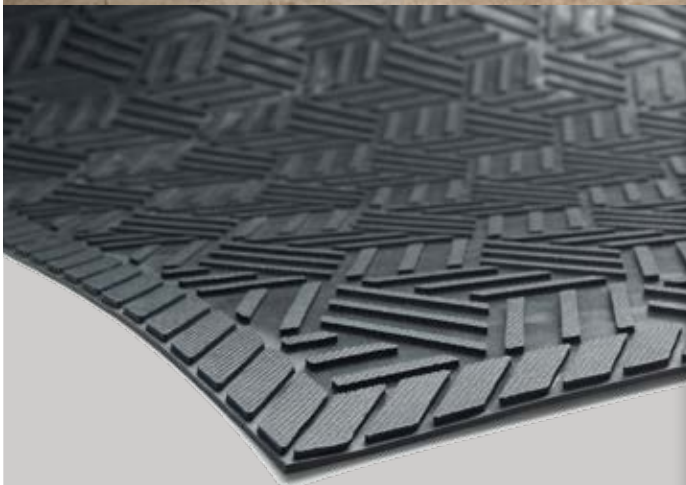


Indoor or Outdoor

100%
customer satisfaction
GUARANTEED

NFSI
HIGH-TRACTION

MADE
IN THE
USA



SUPERSCAPE PLUS®

Scraper • Slip-Resistant

3/16" Product No. 5558

- **Clean** – Multi-directional surface cleats effectively remove and trap dirt and sand below shoe level to prevent tracking; drainable borders filter water off mat
- **Safe** – Certified high-traction by the National Floor Safety Institute (NFSI)
- **Suitable for Harsh Environments** – Grease/oil proof; chemical resistant
- **Easy to Clean** – Lightweight flexible design ensures easy handling and cleaning (shake off soil and hose off); can be commercially laundered or autoclave sterilized
- 3/16" thick nitrile rubber construction

SIZES

2'6" x 3'
3' x 5'
3' x 10'
4' x 6'

Sizes are approximate.



Indoor or Outdoor

100%
customer satisfaction
GUARANTEED

NFSI
HIGH-TRACTION

MADE
IN THE
USA

FLEX TIP™
Scrapper · Slip-Resistant



Outdoor

5/8" Product No. 874

- **Clean** - 2,000 finger-like tips per square foot effectively remove dirt while deep wells hold it to minimize tracking
- **Safe** - OSHA-compliant beveled edges ensure a safe transition from floor to mat
- **Comfortable** - Finger-like tips provide excellent anti-fatigue qualities
- **Easy to Clean** - Flexible design ensures easy handling and cleaning (shake off soil and hose off)
- 5/8" thick natural rubber construction makes this a substantial mat that is unlikely to move, even with heavy winds

SIZES

- 24" x 32"
- 32" x 39"
- 36" x 72"



Indoor or Outdoor



FRONTIER

Scrapper · Slip-Resistant

3/8" Product No. 437

- Spaghetti-like design filters dirt and moisture away from the surface
- Available with edging (sold separately)

SIZES

- 2' x 3' 4' x 8'
- 3' x 5' 3' x 60'
- 3' x 10' 4' x 60'
- 4' x 6'

Sizes are approximate. Additional lengths up to 60' in 3' and 4' widths



With Edging

Without Edging



Burgundy

BRUSH HOG™

Scraper • Slip-Resistant

3/8" Product No. 395



Outdoor

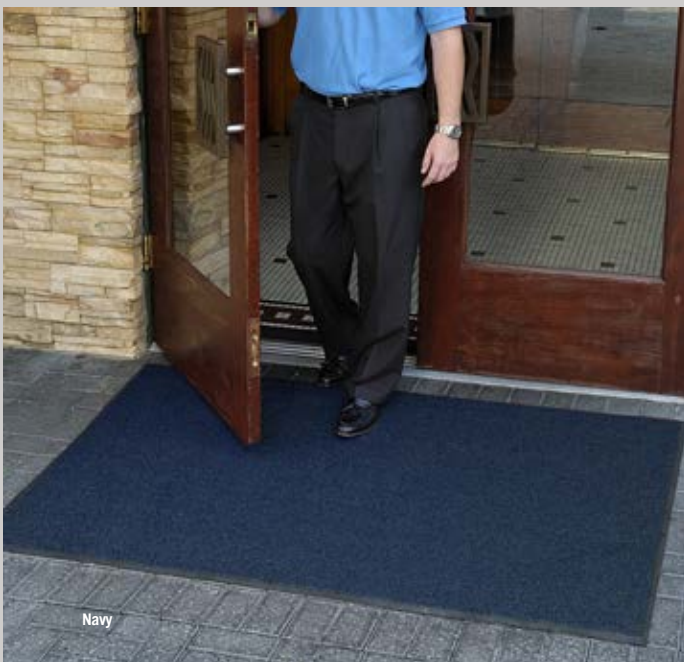
- **Clean** - The turf-pile construction aggressively scrapes dirt from shoes and filters moisture and dirt away from the mat surface
- **Fade Resistant** - Solution-dyed nylon will not fade in sunlight
- **Safe** - Certified high-traction by the National Floor Safety Institute (NFSI)
- Comes standard with 78-mil smooth SBR backing, but is available with 78-mil universal cleated SBR backing

SIZES

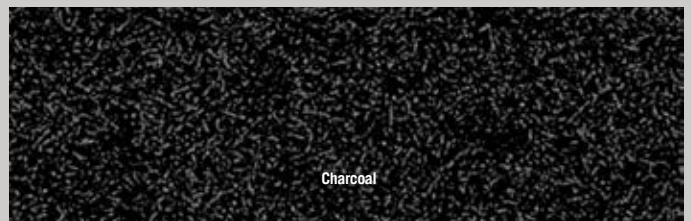
2' x 3'	4' x 8'
3' x 4'	4' x 10'
3' x 5'	4' x 12'
3' x 6'	4' x 16'
3' x 8'	4' x 20'
3' x 10'	6' x 8'
3' x 12'	6' x 12'
3' x 16'	6' x 16'
3' x 20'	6' x 20'
4' x 6'	

Additional lengths up to 60'. See price list for all additional sizes.

Sizes are approximate.



Navy



Charcoal



Brown

Burgundy

Charcoal

Green

Navy



The Wonderful World of

Since its introduction in 1986, the WaterHog has become American's best-selling mat. Renowned for its bi-level design and water dam border, it's highly effective at stopping dirt and moisture, keeping floors clean and dry.

The WaterHog product line has grown substantially over the last three decades to include a wide array of patterns, colors, and sizes. With so many options and a unique nomenclature, selecting a WaterHog mat can seem challenging at first, but these steps are designed to simplify the selection process.

WaterHog®



24-ounce PET

WaterHog® Eco



30-ounce PET

Both the 24-ounce *WaterHog* and 30-ounce *WaterHog Eco* product lines are made with PET, an eco-friendly polyester made from 100% post-consumer recycled plastic bottles.

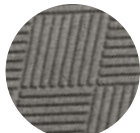
The *WaterHog* (24-ounce) line comes in three designs with 19 color options. The *WaterHog Eco* (30-ounce) line comes in four designs with 8 color options.

WaterHog
(the original)



Waffle

WaterHog
Diamond



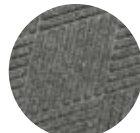
Diamond

WaterHog
Legacy



Hexagon

WaterHog
Eco Premier



Diamond

WaterHog
Eco Elite



Herringbone

WaterHog
Eco Legacy

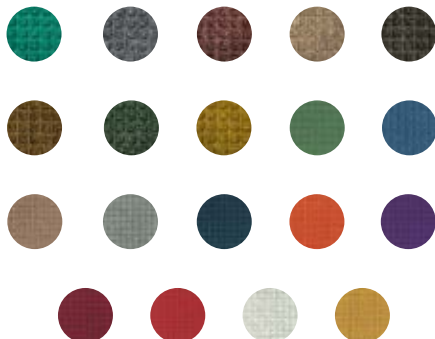


Hexagon

WaterHog
Plus



Swirl



WaterHog® Mats



3. Pick Your Border



Classic Rubber Border

Fashion Fabric Border

4. Pick Your Backing

All WaterHog mats are backed with rubber. The standard backing is a 78-mil SBR (styrene-butadiene rubber) with either a smooth surface for placement on smooth/hard floors (like marble, tile, or wood) or with a universal cleated surface for placement on carpeted floors. Select WaterHog mats with a classic border are available with Anchor Safe® backing, a 100-mil nitrile backing with a heavy tread design to ensure the mats stays in place, even with heavy traffic.



Smooth Backing
78-mil SBR

Recommended for hard floor surfaces



Universal Cleated Backing
78-mil SBR

Designed to perform on both carpeted and smooth floors



Anchor Safe® Backing
100-mil nitrile

Recommended for surfaces with heavy traffic or cart use

5. Add Some Optional “Grandeur”

If you're interested in adding a little grandeur to your entrance matting, you may want to consider a *WaterHog Grand* or *WaterHog Eco Grand* mat. The luxurious rounded mats can be placed at either or both ends of:

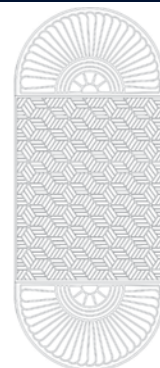
- » WaterHog Diamond
- » WaterHog Legacy
- » WaterHog Eco Elite
- » WaterHog Eco Legacy
- » WaterHog Eco Premier



Half Oval



One End



Two Ends

WaterHog
Fashion Border
Evergreen



WaterHog
Classic Border
Bordeaux

WATERHOG®

Scraper/Wiper • Slip-Resistant

3/8" Classic Border Product No. 200
3/8" Fashion Border Product No. 280



Indoor or Outdoor

WaterHog Classic

WaterHog Fashion



Rubber reinforced textile Rubber border

Rubber reinforced textile Fabric border



WATERHOG® DRAINABLE

3/8" Product No. 250



This borderless WaterHog mat allows water to freely drain away

- **Clean & Dry** – Bi-level surface effectively scrapes dirt and moisture from shoes, trapping it beneath shoe level to prevent tracking; water dam border holds moisture keeping it off your floors (WaterHog mats can hold up to 1.5 gallons of water per square yard)
- **Durable** – Reinforced rubber nubs prevent pile from crushing and extend the performance life of the mat
- **Fade & Stain Resistant** – Solution-dyed fabric is resistant to staining, dries quickly, and will not fade or rot
- **Safe** – Beveled edges provide a safe transition from floor to mat; certified high-traction by the National Floor Safety Institute (NFSI)
- **Eco-Friendly** – Rubber backing contains 20% post-consumer recycled rubber from car tires; PET surface fabric is made from 100% post-consumer recycled plastic bottles
- Available in 19 colors with choice of classic rubber border or fashion fabric border
- Feature 78-mil SBR rubber with universal cleated backing or smooth backing; available with optional Anchor Safe® nitrile rubber backing on classic border mat only

SIZES

- 18" x 27" 4' x 8'
- 2' x 3' 4' x 10'
- 3' x 4' 4' x 12'
- 3' x 5' 4' x 16'
- 3' x 8' 4' x 20'
- 3' x 10' 6' x 8'
- 3' x 12' 6' x 12'
- 3' x 16' 6' x 16'
- 3' x 20' 6' x 20'
- 4' x 6'

See price list for additional size options. Mats up to 40' are available with universal cleated or smooth backing. Mats over 40' are only available with smooth backing. Anchor Safe backing is available upon request on mats up to 20'. Anchor Safe backing features 100 mil nitrile rubber and is a 30% upcharge.

Sizes are approximate.



Aquamarine* Bluestone Bordeaux Camel Charcoal Dark Brown Evergreen Gold* Light Green* Medium Blue
Medium Brown Medium Grey Navy Orange* Purple* Red/Black Solid Red* White* Yellow*

*These colors are ONLY available in 3' and 4' widths.





WaterHog Diamond
Classic Border
Red/Black

WATERHOG® DIAMOND

Scraper/Wiper · Slip-Resistant

3/8" Classic Border Product No. 208
3/8" Fashion Border Product No. 221



Indoor or Outdoor



WaterHog Diamond
Classic Border
Navy

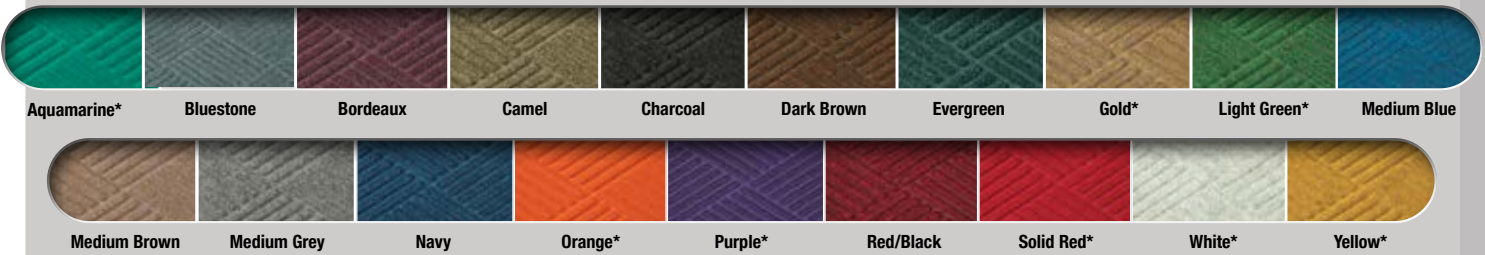
- **Clean & Dry** – Bi-level surface effectively scrapes dirt and moisture from shoes, trapping it beneath shoe level to prevent tracking; water dam border holds moisture keeping it off your floors (WaterHog mats can hold up to 1.5 gallons of water per square yard)
- **Durable** – Reinforced rubber nubs prevent pile from crushing and extend the performance life of the mat
- **Fade & Stain Resistant** – Solution-dyed fabric is resistant to staining, dries quickly, and will not fade or rot
- **Safe** – Beveled edges provide a safe transition from floor to mat; certified high-traction by the National Floor Safety Institute (NFSI)
- **Eco-Friendly** – Rubber backing contains 20% post-consumer recycled rubber from car tires; PET surface fabric is made from 100% post-consumer recycled plastic bottles
- Available in 19 colors with choice of classic rubber border or fashion fabric border
- Feature 78-mil SBR rubber with universal cleated backing or smooth backing; available with optional Anchor Safe® nitrile rubber backing on classic border mat only

SIZES

2' x 3'	4' x 8.4'
3' x 4'	4' x 10'
3' x 5'	4' x 12.2'
3' x 6'	4' x 16'
3' x 8.4'	4' x 20'
3' x 10'	6' x 6'
3' x 12.2'	6' x 8.4'
3' x 16'	6' x 12.2'
3' x 20'	6' x 16'
4' x 6'	6' x 20'

See price list for additional size options. Mats up to 40' are available with universal cleated or smooth backing. Mats over 40' are only available with smooth backing. Anchor Safe backing is available upon request on mats up to 20'. Anchor Safe backing features 100 mil nitrile rubber and is a 30% upcharge.

Sizes are approximate.



*These colors are ONLY available in 3' and 4' widths.





Fashion Border
Red/Black

WATERHOG® LEGACY

Scraper/Wiper • Slip-Resistant

3/8" Classic Border Product No. 201

3/8" Fashion Border Product No. 202

- **Clean & Dry** - Bi-level surface effectively scrapes dirt and moisture from shoes, trapping it beneath shoe level to prevent tracking; water dam border holds moisture keeping it off your floors (WaterHog mats can hold up to 1.5 gallons of water per square yard)
- **Durable** - Reinforced rubber nubs prevent pile from crushing and extend the performance life of the mat
- **Fade & Stain-Resistant** - Solution-dyed PET fabric (24 ounces/yard²) is resistant to staining, dries quickly, and will not fade or rot
- **Safe** - Beveled edges provide a safe transition from floor to mat; certified high-traction by the National Floor Safety Institute (NFSI)
- **Eco-Friendly** - SBR rubber backing contains 20% post-consumer recycled rubber from car tires; PET surface is made from 100% post-consumer recycled plastic bottles
- Available in 19 colors with choice of classic rubber border or fashion fabric border
- Feature 78-mil SBR rubber with universal cleated backing or smooth backing; available with optional Anchor Safe® nitrile rubber backing on classic border mat only

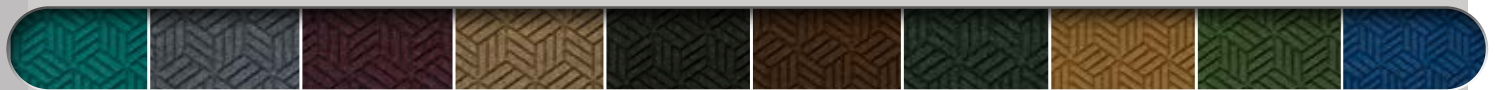
SIZES

- 2' x 3'
- 3' x 4'
- 3' x 5'
- 3' x 8'
- 3' x 10'
- 3' x 12'
- 3' x 16'
- 3' x 20'
- 4' x 4'
- 4' x 6'
- 4' x 8'
- 4' x 10'
- 4' x 12'
- 4' x 16'
- 4' x 20'
- 6' x 6'
- 6' x 8'
- 6' x 10'
- 6' x 12'
- 6' x 16'
- 6' x 20'

Sizes are approximate. Additional lengths up to 61'.



Indoor or Outdoor



Aquamarine* Bluestone Bordeaux Camel Charcoal Dark Brown Evergreen Gold* Light Green* Medium Blue



Medium Brown Medium Grey Navy Orange* Purple* Red/Black Solid Red* White* Yellow*

*These colors are ONLY available in 3' and 4' widths.





WaterHog Grand
Legacy + Two Ends
Aquamarine



WaterHog Grand
Half Oval
Bordeaux



WaterHog Grand
Diamond + One End
Medium Grey

WATERHOG® GRAND

Scraper/Wiper • Slip-Resistant

3/8"	Diamond Half Oval: 272	Legacy Half Oval: 275
3/8"	Diamond + One End: 273	Legacy + One End: 276
3/8"	Diamond + Two Ends: 274	Legacy + Two Ends: 277

WaterHog Grand mats feature a beautiful half oval mat that can be placed at either or both ends of the standard WaterHog Diamond or WaterHog Legacy mat to create an attractive and "grand" entrance to your facility.



Indoor or Outdoor

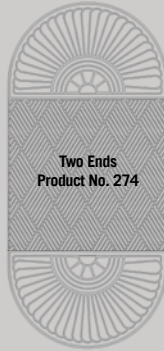
WaterHog Diamond



Half Oval
Product No. 272



One End
Product No. 273



Two Ends
Product No. 274

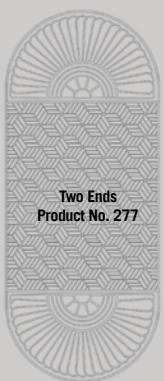
WaterHog Legacy



Half Oval
Product No. 275



One End
Product No. 276



Two Ends
Product No. 277

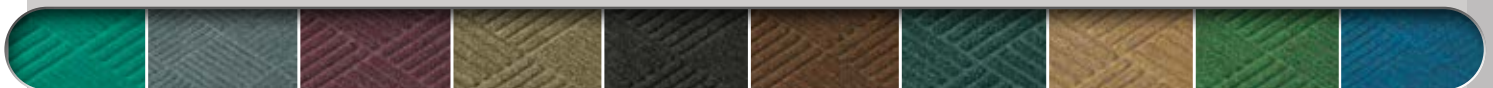
- **Clean & Dry** – Bi-level surface effectively scrapes dirt and moisture from shoes, trapping it beneath shoe level to prevent tracking; water dam border holds moisture keeping it off your floors (WaterHog mats can hold up to 1.5 gallons of water per square yard)
- **Durable** – Reinforced rubber nubs prevent pile from crushing and extend the performance life of the mat
- **Fade & Stain Resistant** – Solution-dyed fabric is resistant to staining, dries quickly, and will not fade or rot
- **Safe** – Beveled edges provide a safe transition from floor to mat; certified high-traction by the National Floor Safety Institute (NFSI)
- **Eco-Friendly** – Rubber backing contains 20% post-consumer recycled rubber from car tires
- Available in 19 colors with 78-mil SBR rubber with universal cleated backing or smooth backing

SIZES

HALF OVAL	TWO ENDS
3' x 1.8'	3' x 7'
4' x 2.3'	3' x 11.7'
6' x 3.3'	3' x 15.5'
	3' x 19.4'
ONE END	3' x 23.2'
3' x 5.5'	4' x 8'
3' x 10'	4' x 12.6'
3' x 13.9'	4' x 16.5'
3' x 17.7'	4' x 20.3'
3' x 21.6'	6' x 10.1'
4' x 5.9'	6' x 14.8'
4' x 10.5'	6' x 18.6'
4' x 14.4'	6' x 22.4'
4' x 18.2'	
4' x 22'	
6' x 7'	
6' x 11.6'	
6' x 15.4'	
6' x 19.3'	
6' x 23.1'	

See price list for additional size options. Mats up to 40' are available with universal cleated or smooth backing. Mats over 40' are only available with smooth backing.

Sizes are approximate.



Aquamarine* Bluestone Bordeaux Camel Charcoal Dark Brown Evergreen Gold* Light Green* Medium Blue



Medium Brown Medium Grey Navy Orange* Purple* Red/Black Solid Red* White* Yellow*

*These colors are ONLY available in 3' and 4' widths.



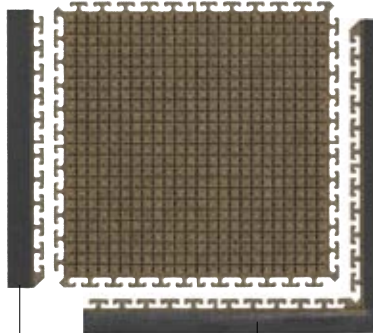


WATERHOG® MODULAR TILE

Scraper/Wiper · Slip-Resistant

7/16" Product No. 2210

- **Clean & Dry** - Bi-level surface effectively scrapes dirt and moisture from shoes, trapping it beneath shoe level to prevent tracking
- **Durable** - Reinforced rubber nubs prevent pile from crushing and extend the performance life of the mat
- **Fade & Stain-Resistant** - Solution-dyed fabric (24 ounces/square yard) is resistant to staining, dries quickly, and will not fade or rot
- **Easy to Install** - Tiles link together easily and are designed to be installed without glue or the need for professional installers
- Tiles are 7/16" thick and available in 18" or 36" tiles with 13 color options
- Feature 200-mil SBR cleated rubber backing
- Side and corner borders (sold separately) securely link to the outer perimeter of the installation



side border

corner border

SIZES

18" x 18" x 7/16"	36" x 36" x 7/16"
18" Side Border	36" Side Border
18" Corner Border	36" Corner Border

Camel



Bluestone

Bordeaux

Camel

Charcoal

Dark Brown



Evergreen

Light Green

Medium Blue

Medium Brown

Medium Grey

Navy

Red/Black

Solid Red



Indoor or Outdoor



MADE IN THE USA

WATERHOG® TILE

Scraper/Wiper · Slip-Resistant

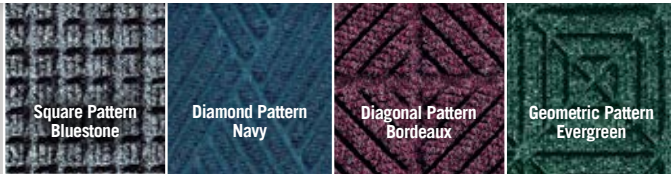


Indoor or Outdoor

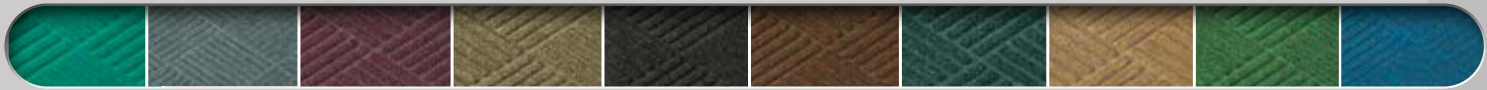
1/4" or 7/16"	Product No. 210	Square
1/4" or 7/16"	Product No. 216	Diamond
1/4" or 7/16"	Product No. 219	Diagonal
1/4" or 7/16"	Product No. 220	Geometric

- **Clean & Dry** – Bi-level surface effectively scrapes dirt and moisture from shoes, trapping it beneath shoe level to prevent tracking
- **Durable** – Reinforced rubber nubs prevent pile from crushing and extend the performance life of the mat
- **Fade & Stain Resistant** – Solution-dyed fabric is resistant to staining, dries quickly, and will not fade or rot
- **Safe** – Certified high-traction by the National Floor Safety Institute (NFSI)
- Available in 19 colors with choice of 4 patterns: waffle, diamond, diagonal, or geometric
- Available with choice of 100-mil or 200-mil SBR cleated rubber backing

SIZE
18" x 18"



WaterHog Tile
Geometric Pattern
Dark Brown



Aquamarine Bluestone Bordeaux Camel Charcoal Dark Brown Evergreen Gold Light Green Medium Blue



Medium Brown Medium Grey Navy Orange Purple Red/Black Solid Red White Yellow



Indoor or Outdoor

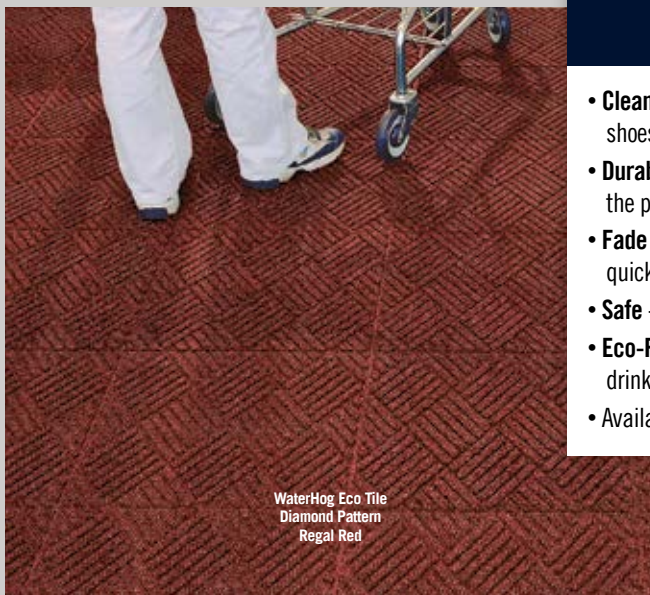
WATERHOG® ECO TILE

Scraper/Wiper · Slip-Resistant

1/4" or 7/16"	Product No. 2215	Geometric
1/4" or 7/16"	Product No. 2217	Diagonal
1/4" or 7/16"	Product No. 2218	Diamond

- **Clean & Dry** – Bi-level surface effectively scrapes dirt and moisture from shoes, trapping it beneath shoe level to prevent tracking
- **Durable** – Reinforced rubber nubs prevent pile from crushing and extend the performance life of the tiles
- **Fade & Stain Resistant** – Solution-dyed PET fabric is resistant to staining, dries quickly, and will not fade or rot
- **Safe** – Certified high-traction by the National Floor Safety Institute (NFSI)
- **Eco-Friendly** – PET fabric is made from 100% post-consumer recycled plastic from drink bottles, and SBR rubber backing contains 20% recycled rubber from car tires
- Available in 8 colors with choice of 3 patterns: diamond, diagonal, or geometric

SIZE
18" x 18"



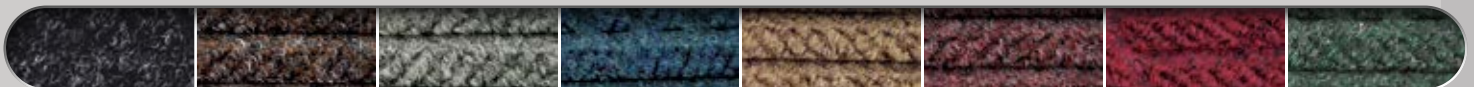
WaterHog Eco Tile
Diamond Pattern
Regal Red



Geometric Pattern

Diagonal Pattern

Diamond Pattern



Black Smoke Chestnut Brown Grey Ash Indigo Khaki Maroon Regal Red Southern Pine

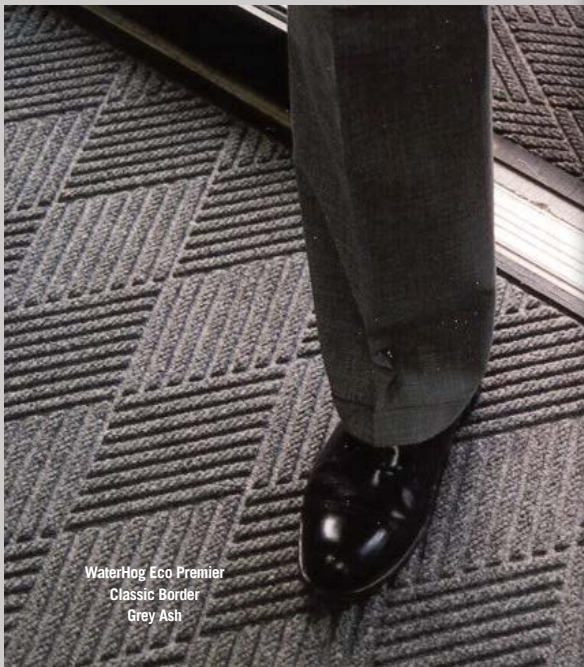




WaterHog Eco Premier
Classic Border
Charcoal

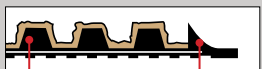


Indoor or Outdoor



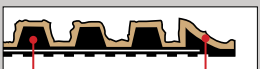
WaterHog Eco Premier
Classic Border
Grey Ash

Classic Rubber Border



Rubber reinforced textile Rubber border

Fashion Fabric Border



Rubber reinforced textile Fabric Border

WATERHOG® ECO PREMIER

Scraper/Wiper · Slip-Resistant

3/8" Classic Border Product No. 2295
3/8" Fashion Border Product No. 2297

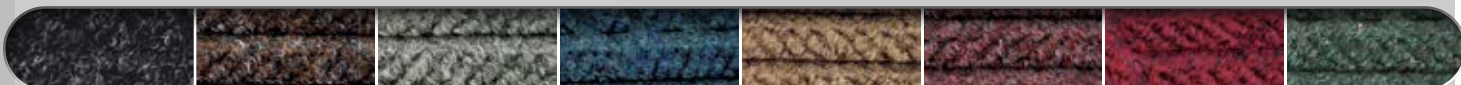
- **Clean & Dry** - Raised nubs remove dirt and moisture from shoes and trap it below foot level; water dam border holds up to 1.5 gallons of water per square yard, keeping your floors clean, dry, and safe
- **Eco-Friendly** - PET fabric is made from 100% post-consumer recycled plastic from drink bottles, and SBR rubber backing contains 20% recycled rubber from car tires
- **Safe** - Beveled edges provide a safe transition from floor to mat; certified high-traction by the National Floor Safety Institute (NFSI)
- **Durable** - Reinforced rubber nubs prevent pile from crushing and extend the performance life of the mat
- **Fade & Stain Resistant** - Solution-dyed PET fabric is resistant to staining, dries quickly, and will not fade or rot
- Available in 8 colors with choice of classic rubber border or fashion fabric border
- Feature 78-mil SBR rubber with universal cleated backing or smooth backing; available with optional Anchor Safe® nitrile rubber backing on classic border mat only

SIZES

2' x 3'	4' x 8.4'
3' x 4'	4' x 10'
3' x 5'	4' x 12.2'
3' x 6'	4' x 16'
3' x 8.4'	4' x 20'
3' x 10'	6' x 6'
3' x 12.2'	6' x 8.4'
3' x 16'	6' x 12.2'
3' x 20'	6' x 16'
4' x 6'	6' x 20'

See price list for additional size options. Mats up to 40' are available with universal cleated or smooth backing. Mats over 40' are only available with smooth backing. Anchor Safe backing is available upon request on mats up to 20'. Anchor Safe backing features 100 mil nitrile rubber and is a 30% upcharge.

Sizes are approximate.



Black Smoke

Chestnut Brown

Grey Ash

Indigo

Khaki

Maroon

Regal Red

Southern Pine





Classic Border
Maroon

WATERHOG® ECO ELITE

Scraper/Wiper · Slip-Resistant



Indoor or Outdoor

3/8" Classic Border Product No. 2240
3/8" Fashion Border Product No. 2241

- **Clean & Dry** - Raised nubs remove dirt and moisture from shoes and trap it below foot level; water dam border holds up to 1.5 gallons of water per square yard, keeping your floors clean, dry, and safe
- **Eco-Friendly** - PET fabric is made from 100% post-consumer recycled plastic from drink bottles, and SBR rubber backing contains 20% recycled rubber from car tires
- **Safe** - Beveled edges provide a safe transition from floor to mat; certified high-traction by the National Floor Safety Institute (NFSI)
- **Durable** - Reinforced rubber nubs prevent pile from crushing and extend the performance life of the mat
- **Fade & Stain Resistant** - Solution-dyed PET fabric is resistant to staining, dries quickly, and will not fade or rot
- Available in 8 colors with choice of classic rubber border or fashion fabric border
- Feature 78-mil SBR rubber with universal cleated backing or smooth backing; available with optional Anchor Safe® nitrile rubber backing on classic border mat only

SIZES

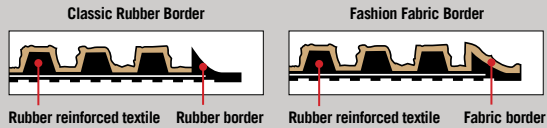
2' x 3'	4' x 10'
3' x 4'	4' x 12.2'
3' x 5'	4' x 16'
3' x 6'	4' x 20'
3' x 8.4'	6' x 6'
3' x 10'	6' x 8.4'
3' x 12.2'	6' x 12.2'
3' x 16'	6' x 16'
3' x 20'	6' x 20'
4' x 6'	
4' x 8.4'	

See price list for additional size options. Mats up to 40' are available with universal cleated or smooth backing. Mats over 40' are only available with smooth backing. Anchor Safe backing is available upon request on mats up to 20'. Anchor Safe backing features 100 mil nitrile rubber and is a 30% upcharge.

Sizes are approximate.



Fashion Border
Southern Pine



Rubber reinforced textile Rubber border

Rubber reinforced textile Fabric border



Black Smoke

Chestnut Brown

Grey Ash

Indigo

Khaki

Maroon

Regal Red

Southern Pine



Fashion Border
Maroon



Indoor or Outdoor

WATERHOG® ECO LEGACY

Scraper/Wiper · Slip-Resistant

3/8" Classic Border Product No. 2290
3/8" Fashion Border Product No. 2291



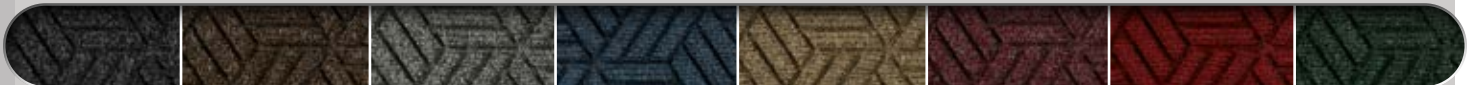
Classic Border
Black Smoke

- **Clean & Dry** - Raised nubs remove dirt and moisture from shoes and trap it below foot level; water dam border holds up to 1.5 gallons of water per square yard, keeping your floors clean, dry, and safe
- **Eco-Friendly** - PET fabric is made from 100% post-consumer recycled plastic from drink bottles, and SBR rubber backing contains 20% recycled rubber from car tires
- **Safe** - Beveled edges provide a safe transition from floor to mat; certified high-traction by the National Floor Safety Institute (NFSI)
- **Durable** - Reinforced rubber nubs prevent pile from crushing and extend the performance life of the mat
- **Fade & Stain Resistant** - Solution-dyed PET fabric is resistant to staining, dries quickly, and will not fade or rot
- Available in 8 colors with choice of classic rubber border or fashion fabric border
- Feature 78-mil SBR rubber with universal cleated backing or smooth backing; available with optional Anchor Safe® nitrile rubber backing on classic border mat only

SIZES

2' x 3'
3' x 4'
3' x 5'
3' x 8'
3' x 10'
3' x 12'
3' x 16'
3' x 20'
4' x 4'
4' x 6'
4' x 8'
4' x 10'
4' x 12'
4' x 16'
4' x 20'
6' x 6'
6' x 8'
6' x 10'
6' x 12'
6' x 16'
6' x 20'

Sizes are approximate. Additional lengths up to 61'.



Black Smoke

Chestnut Brown

Grey Ash

Indigo

Khaki

Maroon

Regal Red

Southern Pine



MADE
IN THE
USA



WaterHog Eco Grand
Elite + Two Ends
Maroon



WaterHog Eco Grand
Elite + One End
Khaki

WATERHOG® ECO GRAND

Scraper/Wiper • Slip-Resistant

3/8"	Half Oval: 2246	Half Oval: 2246
3/8"	Elite + One End: 2243	Premier + One End: 2248
3/8"	Elite + Two Ends: 2244	Premier + Two Ends: 2249

WaterHog Eco Grand mats feature a beautiful half oval mat that can be placed at either or both ends of the standard WaterHog Eco Elite or WaterHog Eco Premier mat to create an attractive and "grand" entrance to your facility.

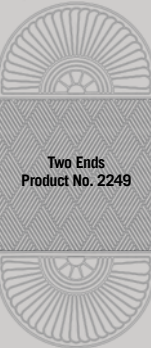


Indoor or Outdoor

WaterHog Eco Elite



WaterHog Eco Premier



- **Clean & Dry** - Raised nubs remove dirt and moisture from shoes and trap it below foot level; water dam border holds up to 1.5 gallons of water per square yard, keeping your floors clean, dry, and safe
- **Eco-Friendly** - PET fabric is made from 100% post-consumer recycled plastic from drink bottles, and SBR rubber backing contains 20% recycled rubber from car tires
- **Safe** - Beveled edges provide a safe transition from floor to mat; certified high-traction by the National Floor Safety Institute (NFSI)
- **Durable** - Reinforced rubber nubs prevent pile from crushing and extend the performance life of the mat
- **Fade & Stain Resistant** - Solution-dyed PET fabric is resistant to staining, dries quickly, and will not fade or rot
- Available in 8 colors with 78-mil SBR rubber with universal cleated backing or smooth backing

SIZES

HALF OVAL	TWO ENDS
3' x 1.8'	3' x 7.1'
4' x 2.3'	3' x 11.7'
6' x 3.3'	3' x 15.5'
	3' x 19.4'
ONE END	3' x 23.2'
3' x 5.5'	4' x 8'
3' x 10'	4' x 12.6'
3' x 13.9'	4' x 16.5'
3' x 17.7'	4' x 20.3'
3' x 21.6'	6' x 10.1'
4' x 5.9'	6' x 14.8'
4' x 10.5'	6' x 18.6'
4' x 14.4'	6' x 22.4'
4' x 18.2'	
4' x 22'	
6' x 7'	
6' x 11.6'	
6' x 15.4'	
6' x 19.3'	
6' x 23.1'	

See price list for additional size options. Mats up to 40' are available with universal cleated or smooth backing. Mats over 40' are only available with smooth backing.

Sizes are approximate.



Black Smoke

Chestnut Brown

Grey Ash

Indigo

Khaki

Maroon

Regal Red

Southern Pine



WATERHOG® ECO ELITE ROLL GOODS

Scraper/Wiper · Slip-Resistant



Indoor or Outdoor

3/8" Product No. 2271* and 2272**

- **Clean & Dry** – Bi-level surface effectively scrapes dirt and moisture from shoes, trapping it beneath shoe level to prevent tracking; water dam border holds moisture keeping it off your floors (WaterHog mats can hold up to 1.5 gallons of water per square yard)
- **Durable & Fade Resistant** – Reinforced rubber nubs prevent pile from crushing and extend the performance life of the mat; solution-dyed polypropylene fabric is fade-resistant
- **Safe** – Beveled edges provide a safe transition from floor to mat; certified high-traction by the National Floor Safety Institute (NFSI)
- **Eco-Friendly** - PET fabric is made from 100% post-consumer recycled plastic from drink bottles, and SBR rubber backing contains 20% post-consumer recycled rubber from car tires
- Available in 8 colors with 78-mil smooth SBR rubber backing
- Designed to be installed like carpeting or loose-laid like a mat

*CUSTOM SIZES

See price list for additional information.

**ROLL SIZE

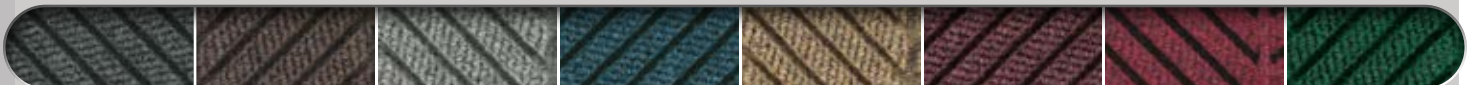
(Does not include nosing)
6' x 67'



Maroon



Grey Ash



Black Smoke

Chestnut Brown

Grey Ash

Indigo

Khaki

Maroon

Regal Red

Southern Pine





Grey Ash

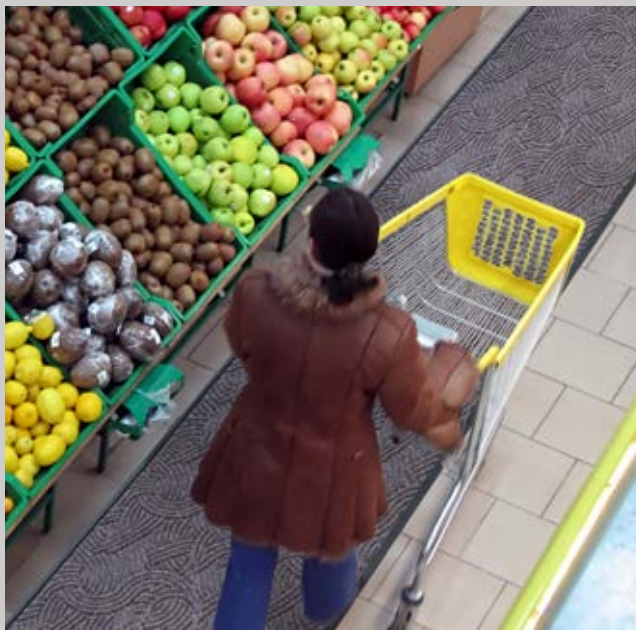


Indoor or Outdoor

WATERHOG® PLUS

Scraper/Wiper • Slip-Resistant

3/8" Product No. 185



Southern Pine

- **Clean & Dry** - Bi-level surface effectively scrapes dirt and moisture from shoes, trapping it beneath shoe level to prevent tracking; water dam border holds moisture keeping it off your floors (WaterHog mats can hold up to 1.5 gallons of water per square yard)
- **Durable** - Reinforced rubber nubs prevent pile from crushing and extend the performance life of the mat
- **Fade & Stain-Resistant** - Solution-dyed PET fabric (30 ounces/square yard) is resistant to staining, dries quickly, and will not fade or rot
- **Eco-Friendly** - PET fabric is made from 100% post-consumer recycled plastic from drink bottles
- **Safe** - Beveled edges provide a safe transition from floor to mat; certified high-traction by the National Floor Safety Institute (NFSI)
- Available in 8 colors with a classic (rubber) border and durable 90-mil nitrile rubber backing

SIZES

- 2' x 3'
- 3' x 4'
- 3' x 5'
- 3' x 10'
- 4' x 6'
- 4' x 8'
- 5' x 7'*
- 5' x 10'*
- 6' x 12'



Black Smoke

Chestnut Brown

Grey Ash

Indigo

Khaki

Maroon

Regal Red

Southern Pine





WATERHOG® DIAMONDCORD

Scrapper/Wiper · Slip-Resistant

3/8" Product No. 296



Waterhog Diamondcord
Brown

- **Clean & Dry** - Bi-level surface effectively scrapes dirt and moisture from shoes, trapping it beneath shoe level to prevent tracking; water dam border holds moisture keeping it off your floors (WaterHog mats can hold up to 1.5 gallons of water per square yard)
- **Durable** - Reinforced rubber nubs prevent pile from crushing and extend the performance life of the mat
- **Fade & Stain-Resistant** - Solution-dyed polypropylene fabric is resistant to staining, dries quickly, and will not fade or rot
- **Safe** - Beveled edges provide a safe transition from floor to mat; certified high-traction by the National Floor Safety Institute (NFSI)
- **Eco-Friendly** - Rubber backing contains 20% post-consumer recycled rubber from car tires
- Available in 3 colors with a classic rubber border
- Feature 78-mil SBR rubber with universal cleated backing or smooth backing; available with optional Anchor Safe® nitrile rubber backing

SIZES

2' x 3' 4' x 6'
 3' x 4' 4' x 8.4'
 3' x 5' 4' x 10'
 3' x 6' 6' x 6'
 3' x 8.4' 6' x 8.4'
 3' x 10'

Sizes are approximate. See price list for additional sizes. Mats up to 40' are standard Cleated backing and available in Smooth backing on request. Anchor Safe backing is available upon request on mats up to 20'. Mats over 40' are available only in Smooth backing.
 *Note: Anchor Safe backing available with a 30% upcharge. This backing is .100 mil thick nitrile rubber.



Black

Brown

Grey

WATERHOG® MASTERPIECE SELECT

Scrapper/Wiper · Slip-Resistant

3/8" Product No. 265

- **Clean & Dry** - Bi-level surface effectively scrapes dirt and moisture from shoes, trapping it beneath shoe level to prevent tracking; water dam border holds moisture keeping it off your floors (WaterHog mats can hold up to 1.5 gallons of water per square yard)
- **Durable** - Reinforced rubber nubs prevent pile from crushing and extend the performance life of the mat
- **Fade & Stain-Resistant** - Solution-dyed polypropylene fabric is resistant to staining, dries quickly, and will not fade or rot
- **Safe** - Beveled edges provide a safe transition from floor to mat; certified high-traction by the National Floor Safety Institute (NFSI)
- **Eco-Friendly** - Rubber backing contains 20% post-consumer recycled rubber from car tires
- Available in 6 colors with a classic rubber border
- Feature 78-mil SBR rubber with universal cleated backing or smooth backing; also available with optional Anchor Safe® nitrile rubber backing

SIZES

2' x 3' 4' x 6'
 3' x 4' 4' x 8'
 3' x 5' 4' x 10'
 3' x 8' 6' x 8'
 3' x 10'

Sizes are approximate. See price list for additional sizes. Mats up to 40' are standard Cleated backing and available in Smooth backing on request. Anchor Safe backing is available upon request on mats up to 20'. Mats over 40' are available only in Smooth backing.
 *Note: Anchor Safe backing available with a 30% upcharge. This backing is .100 mil thick nitrile rubber.



Indoor



Mauve

Nutmeg

Ocean Wave



Pewter

Smoky Teal

Thunderstorm





WATERHOG® LOW PROFILE

Scraper/Wiper • Slip-Resistant

1/4" Product No. 251

- **Clean & Dry** – Bi-level surface effectively scrapes dirt and moisture from shoes, trapping it beneath shoe level to prevent tracking
- **Durable** – Reinforced rubber nubs prevent pile from crushing and extend the performance life of the mat
- **Fade & Stain Resistant** - Solution-dyed fabric is resistant to staining, dries quickly, and will not fade or rot
- **Safe** – Low-profile borders help reduce potential tripping hazards; certified high-traction by the National Floor Safety Institute (NFSI)
- Available in 3 neutral colors to blend with virtually any décor
- Feature Anchor Safe® backing (made from durable 100-mil nitrile rubber) designed to keep mats in place

SIZES

3' x 5'
3' x 10'
4' x 6'
4' x 10'

Sizes are approximate.



WaterHog Low Profile
Coal Black



Coal Black

Cocoa Brown

Granite



Indoor or Outdoor

BERBER ROLL GOODS

Carpeted (Wiper) • Slip-Resistant

3/8" Roll Goods

Product No. 2281

3/8" Roll Goods, custom sizes

Product No. 2282

- **Durable** - Heavy 52-ounce solution-dyed fabric is stain resistant and has excellent light fastness; tough enough for outdoor use
- **Customizable** - In addition to being available in custom sizes, this product can be made with your custom logo inlaid (no setup fees)
- **Safe** - High-performance rubber backing helps hold the mat in place to minimize slipping hazards
- **Attractive** - Loop pile "berber" construction features a hobnail design for an upscale look
- **Easy to Clean** - Polypropylene fabric is naturally resistant to staining and fading 3/8" thick and available in 17 colors to match any décor
- Designed to be installed like carpeting or loose-laid like a mat; available with singed borders or vinyl nosing (sold separately)

ROLL SIZES

(Does not include nosing)
6' x 125'
12' x 125'

CUSTOM SIZES

Available in 3' to 12' widths in sizes up to 12' x 50'. Widths over 6' may be seamed based on material availability. See price list for additional information. Sizes are approximate.



Berber Roll Goods
Charcoal



Bright Red*

Burgundy*

Charcoal

Dark Blue

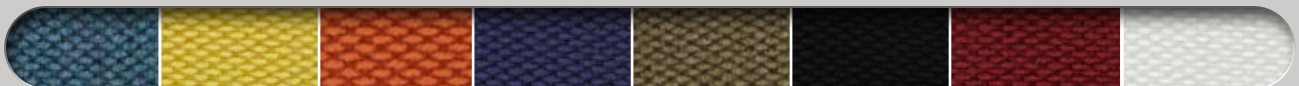
Dark Brown

Dark Green*

Emerald Green*

Gold*

Grey



Light Blue*

Light Yellow*

Orange*

Purple*

Sand

Solid Black*

Solid Red*

White*

*These colors are available in 6' width rolls only





MICROLUXX™

Carpeted (Wiper)

3/8" Product No. 1201

The MicroLuxx mat features traditional nylon fibers blended with finer denier fibers that work together to absorb high levels of dirt and moisture.

- **Superior Dust & Moisture Control** - Absorbs and retains 2.5 times more moisture than standard carpeted mats
- **Fade Resistant** - Solution-dyed nylon won't fade in sunlight or with repeated washing; impervious to bleach
- **Safe** - Beveled edges provide a safe transition from mat to floor; certified high-traction by the National Floor Safety Institute
- **Durable nitrile rubber backing** (available in 52, 65, or 90 mil)

SIZES

2' x 3'
2.5' x 3'
2.5' x 4'
3' x 4'
3' x 5'
3' x 10'
4' x 6'
4' x 8'
5' x 8'
5' x 10'
5' x 12'
6' x 8'
6' x 10'
6' x 12'

Custom sizes up to 40'
Sizes are approximate.



PLUSH™

Carpeted (Wiper)

3/8" Product No. 180

- **Superior Moisture & Dust Control** - Heavier carpet pile absorbs and retains 50% more moisture and dust than standard mats
- **Resilient** - High-twist, heat-set nylon resists crushing to better trap dirt and extend the useful life of the mat
- **Fade Resistant** - Solution-dyed nylon won't fade in sunlight or with repeated washing; impervious to bleach
- **Safe** - Certified high-traction by the National Floor Safety Institute (NFSI)
- Commercially launderable
- Available in 8 color options on durable 90-mil nitrile rubber with multiple backing options (smooth, cleated, or suction) to ensure the mat stays in place on your floor

SIZES

2' x 3'
3' x 4'
3' x 10'
4' x 6'
4' x 8'

See price list for all additional sizes
Sizes are approximate.



Black

Brown/Black

Dark Green

Deeper Navy

Golden Brown

Midnight Grey

Red Pepper

Slate Grey





Indoor



COLORSTAR®

Carpeted (Wiper)

3/8" Product No. 100

- **Eco-Friendly** – ColorStar mats are made with PET (polyethylene terephthalate), a type of polyester yarn that features 50% recycled content reclaimed from plastic drink bottles
- **Fade-Resistant** – PET yarn has excellent color-fastness and is resistant to fading from repeated washing or cleaning.
- **Stain-Resistant** – PET yarn is naturally stain resistant, making it easy to remove stains from the mat
- **Safe** – Certified high-traction by the National Floor Safety Institute (NFSI)
- Available in 24 colors
- Available with choice of SBR (48 mil) or nitrile rubber (52 mil, 65 mil, 90 mil)

SIZES

2' x 3'
 3' x 4'
 3' x 5'
 3' x 6'
 3' x 8'
 3' x 10'
 4' x 6'
 4' x 8'
 4' x 10'
 5' x 8'
 5' x 10'
 5' x 12'
 6' x 8'
 6' x 10'
 6' x 12'

Custom sizes up to 40'
 Sizes are approximate.



Autumn Brown Black Opal Blueberry Frost Browntone Burgundy Berry



Cabot Grey Charcoal Chocolate Cranberry Dark Granite Emerald Green Glen Green Grey Midnight Blue Navy



Platinum Red/Black Silver Slate Solid Black Solid Red Stardust Grey Steel Blue Suede



Indoor



ENVIRO PLUS®

Carpeted (Wiper)

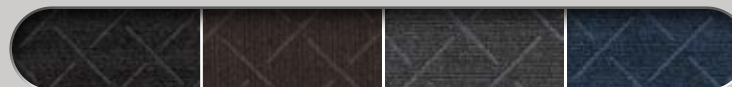
3/8" Product No. 2202

- **Clean** - Stops dirt and moisture at your door
- **Eco-Friendly** - Surface features PET fabric which is made from post-consumer plastic drink bottles; crumb rubber backing contains 94% recycled rubber
- **Durable** - PET fabric is stain-resistant and fade-resistant
- **Safe** - Certified high-traction by the National Floor Safety Institute (NFSI)
- Available in 4 colors, each with an attractive diamond weave pattern

SIZES

2' x 3'
 3' x 4'
 3' x 5'
 3' x 8'
 3' x 10'
 3' x 12'
 4' x 6'
 4' x 8'
 4' x 10'
 4' x 12'
 6' x 8'
 6' x 12'

Sizes are approximate.
 See price list for all additional sizes.



Black Smoke Chestnut Grey Ash Indigo





Chocolate



Autumn Brown Black Opal Blueberry Frost Browntone Burgundy Berry



Cabot Grey Charcoal Chocolate Cranberry Dark Granite Emerald Green Glen Green Grey Midnight Blue Navy



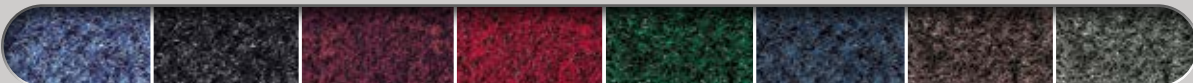
Platinum Red/Black Silver Slate Solid Black Solid Red Stardust Grey Steel Blue Suede



Indoor



Academy Blue



Academy Blue Black Burgundy Cardinal Forest Green Navy Sable Salt & Pepper



Indoor

STYLIST

Carpeted (Wiper)

3/8" Product No. 872

- **Eco-Friendly** - Stylist mats are made with PET (polyethylene terephthalate), a type of polyester yarn that features 50% recycled content reclaimed from plastic drink bottles
- **Fade-Resistant** - PET yarn has excellent colorfastness and is resistant to fading
- **Stain-Resistant** - PET yarn is naturally stain resistant, making it easy to remove stains from the mat
- Designed to release dirt easily with daily vacuuming, or can be cleaned with a commercial carpet cleaning system; not launderable
- Available in 24 colors with 70-mil smooth vinyl backing

SIZES

2' x 3'
3' x 4'
3' x 5'
3' x 6'
3' x 8'
3' x 10'
4' x 6'
4' x 8'
4' x 10'
5' x 8'
5' x 10'
5' x 12'
6' x 8'
6' x 10'
6' x 12'

Custom sizes up to 40'

Sizes are approximate.

IMPRESSIONIST

Carpeted (Wiper)

3/8" Product No. 871

- Durable olefin yarn resists fading and straining
- Designed to release dirt easily with daily vacuuming, or can be cleaned with commercial carpet cleaning system; not launderable
- Available in 8 colors with 70-mil smooth vinyl backing

SIZES

2' x 3' 4' x 6'
3' x 4' 4' x 8'
3' x 5' 3' x 60'
3' x 6' 4' x 60'
3' x 10'

Sizes are approximate.

See price list for all additional sizes. 3' and 4' in lengths up to 60'. 6' widths lengths up to 40'.



Indoor

COBBLESTONE

Carpeted (Wiper)

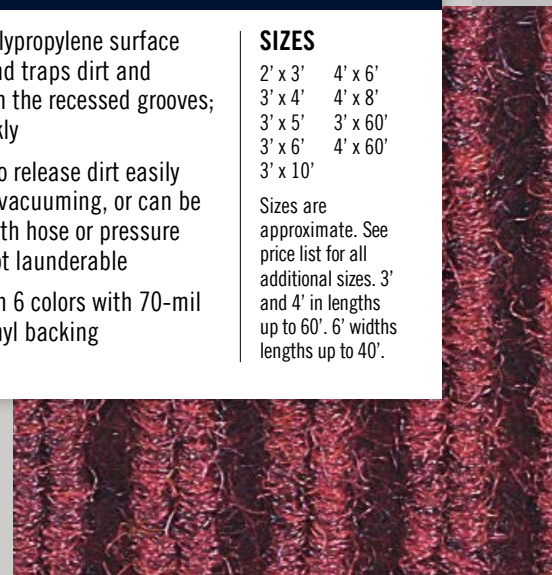
3/8" Product No. 870

- Durable polypropylene surface scrapes and traps dirt and moisture in the recessed grooves; dries quickly
- Designed to release dirt easily with daily vacuuming, or can be cleaned with hose or pressure washer; not launderable
- Available in 6 colors with 70-mil smooth vinyl backing

SIZES

2' x 3' 4' x 6'
 3' x 4' 4' x 8'
 3' x 5' 3' x 60'
 3' x 6' 4' x 60'
 3' x 10'

Sizes are approximate. See price list for all additional sizes. 3' and 4' in lengths up to 60'. 6' widths lengths up to 40'.



Blue

Brick

Brownstone

Charcoal

Green

Silver

VICTORY

Carpeted (Wiper)

3/8" Product No. 873

- Durable polypropylene surface scrapes and traps dirt and moisture in the recessed grooves; dries quickly
- Designed to release dirt easily with daily vacuuming, or can be cleaned with commercial carpet cleaning system; not launderable
- Available in 5 colors with 70-mil smooth vinyl backing

SIZES

2' x 3' 4' x 6'
 3' x 4' 4' x 8'
 3' x 5' 3' x 60'
 3' x 6' 4' x 60'
 3' x 10'

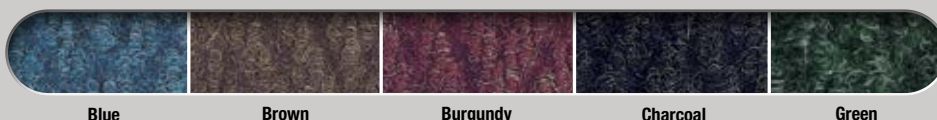
Sizes are approximate. See price list for all additional sizes. 3' and 4' in lengths up to 60'. 6' widths lengths up to 40'.



Indoor



Victory
Burgundy



Blue

Brown

Burgundy

Charcoal

Green



MADE
IN THE
USA



Chemical Resistant

Many M+A Matting mats are manufactured with nitrile rubber which is resistant to most commonly used chemicals.



Oily Environment

Nitrile rubber mats withstand degradation from oils and grease. These mats are suitable for use in environments with industrial oils, machine lubricants, greases, food grade oils, etc.



Safety

Matting and tiles with highly visible, colored borders and beveled edges reduce trips and falls.



Welding Safe

Matting that is suitable for use in locations of high temperatures and welding slag. The temperature resistant rubber can withstand temperatures up to 1742 degrees Fahrenheit from welding slag and hot metal shavings.



ESD

Matting that dissipates static electricity from people to protect sensitive equipment and small static generated electric shocks.



Cart Traffic

Matting and tiles designed to withstand heavy cart traffic.



Recycled Content

Contains recycled content.

Mat Symbols



Scraper

Scraper mats are heavy-duty mats designed to stop mud and larger particles of dirt from being tracked inside buildings.



Scraper/Wiper

Scraper/Wiper mats provide scraping action and wiping to further stop dirt and moisture from entering a facility. These mats are typically made of tough heavy-duty commercial fabrics. They retain dust in recessed grooves while absorbing moisture in the fabric surface.



Carpeted (Wiper)

Wiper mats are designed to stop any remaining dust and moisture. These mats are made with a variety of carpeted surfaces and colors to compliment a wide range of interiors.



Anti-Fatigue

Ergonomic mats and floor tiles reduce fatigue by up to 50%. Anti-fatigue mats help increase blood circulation and reduce pressure on the body's musculoskeletal system. They also reduce foot arch pronation, varicose veins, and pain commonly attributed to standing for long periods of time.



Anti-Slip

Uniquely designed texturized surfaces prevent slip and fall accidents. Heavy-duty rubber keeps the mats in place and prevents movement on a variety of surfaces.



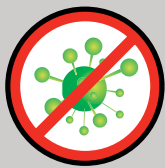
Damp Areas

May be used in areas where moisture is present.



Wet Areas

Recommended for use in wet areas. While other mats may be suitable for use in wet areas, mats with the wet icon are the best choice for wet areas. These mats are designed to provide traction even in very wet conditions.



Anti-Microbial

Matting permanently treated with an anti-microbial agent that guards against degradation from micro-organisms and minimizes mats being a source of odors.